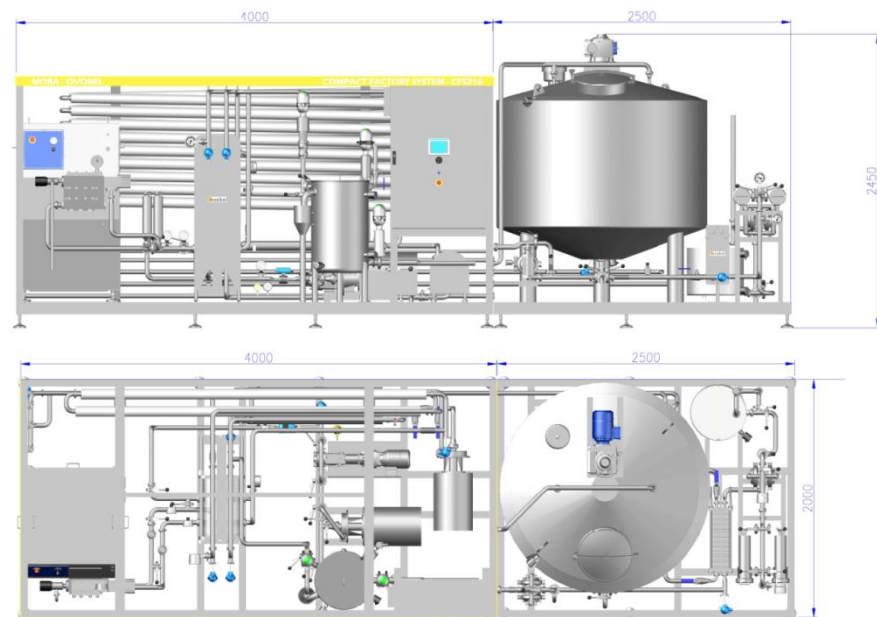
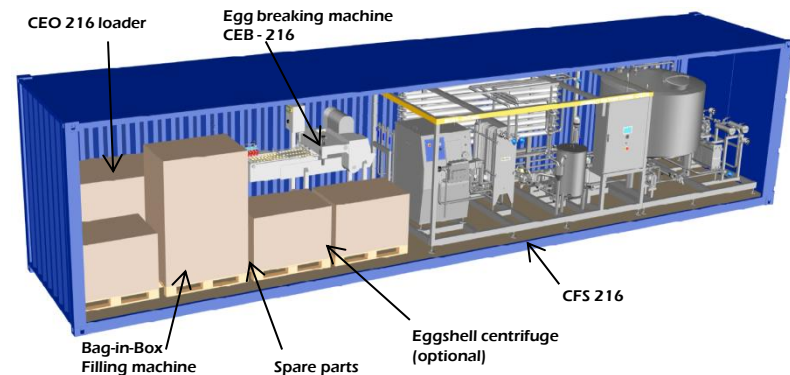


DIMENSIONS - CFS 216



40' Shipping container



COMPACT FACTORY SYSTEMS



Moba and Ovobel introduce the "Compact Factory Systems".

Breaking – Pasteurizing - Filling

The Compact Factory Systems are designed to process whole egg or separated products.

The Compact Factory Systems are directly connected to a Moba egg breaking machine with capacities from 10.800 up to 43.200 eggs/hr. (30 – 120 cph)

The CFS consists of modular skids :

- Egg Liquid Receiving System with product filtering, cooling and storage tank(s)
- Egg Pasteurization System with "Integrated homogenizer"

The CFS is equipped with a built-in CIP system.

All Compact Factory Systems can be upgraded with different filling and mixing systems.

CFS 108 (s)*	CFS 216 (s)*	CFS 432 (s)*
500 lph	1000 lph	2000 lph

(s)* Separated egg products

FILLING MACHINE

BAG-IN-BOX

CFS 216

1000 lph



EGG BREAKER

Whole egg 1.000 lph



● Upgradable with different filling and mixing systems :

- Manual / automatic container filling system
- Non - aseptic bag in box filling machine
- Aseptic bag in box filling machine
- Storage, mixing or aseptic tanks

● Options :

- Separated egg products / Whole egg
- Fully automatic or manual
- Plate heaters / Tube heaters
- Dual filters / Automatic filters
- Icewater group , Air compressor